

GWST-CLF Large Flange Closed End Threaded Insert

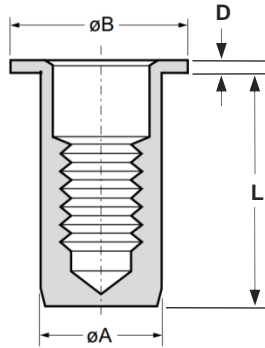
Steel · Large flange · Round · Closed end
M4 - M12

Features

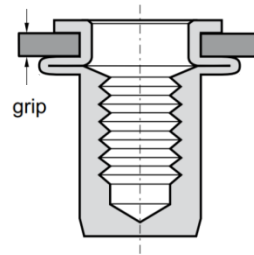
- Designed to provide load bearing threads in thin sheet materials
- Large flange head provides a load bearing surface and reinforces the hole to prevent push-out
- Closed end prevents the ingress of dirt and fluids into thread and electrical circuits

Material

- Steel, zinc plated



Before Placement



After Placement

Part No.	Thread Size	Grip Range		Hole Size	øA	øB	D	L
		min.	max.					
GWST-CLFM4-0530	M4	0.5	3.0	6.0	6.0	10.0	0.75	14.75
GWST-CLFM4-3045		3.0	4.5					16.25
GWST-CLFM5-0530	M5	0.5	3.0	7.0	7.0	11.0	1.0	18.0
GWST-CLFM5-3055		3.0	5.5					20.5
GWST-CLFM6-0530	M6	0.5	3.0	9.0	9.0	13.0	1.5	21.5
GWST-CLFM6-3055		3.0	5.5					24.5
GWST-CLFM6-5580		5.5	8.0					27.0
GWST-CLFM8-0530	M8	0.5	3.0	11.0	11.0	16.0	1.5	22.5
GWST-CLFM8-3055		3.0	5.5					25.5
GWST-CLFM8-5580		5.5	8.0					28.0
GWST-CLFM10-0835	M10	0.8	3.5	12.45	12.4	18.5	2.25	27.5
GWST-CLFM10-3560		3.5	6.0					30.5
GWST-CLFM12-1040	M12	1.0	4.0	16.0	16.0	23.0	2.0	35.0
GWST-CLFM12-3070		3.0	7.0					38.0

Thread Size	Max. torque	Pull-out	Torque-to-turn	Shear strength
	Nm max.	Kn	Nm	kN
M4	> ~7.5	> ~10.8	~2.7	~2.6
M5	> ~10.0	> ~12.0	~4.7	~3.5
M6	> ~19.0	> ~21.0	~7.0	~5.0
M8	> ~50.0	> ~33.0	~13.0	~6.0
M10	> ~70.0	> ~40.0	~15.0	~8.0
M12	> ~120.0	> ~63.0	~32.0	~11.5